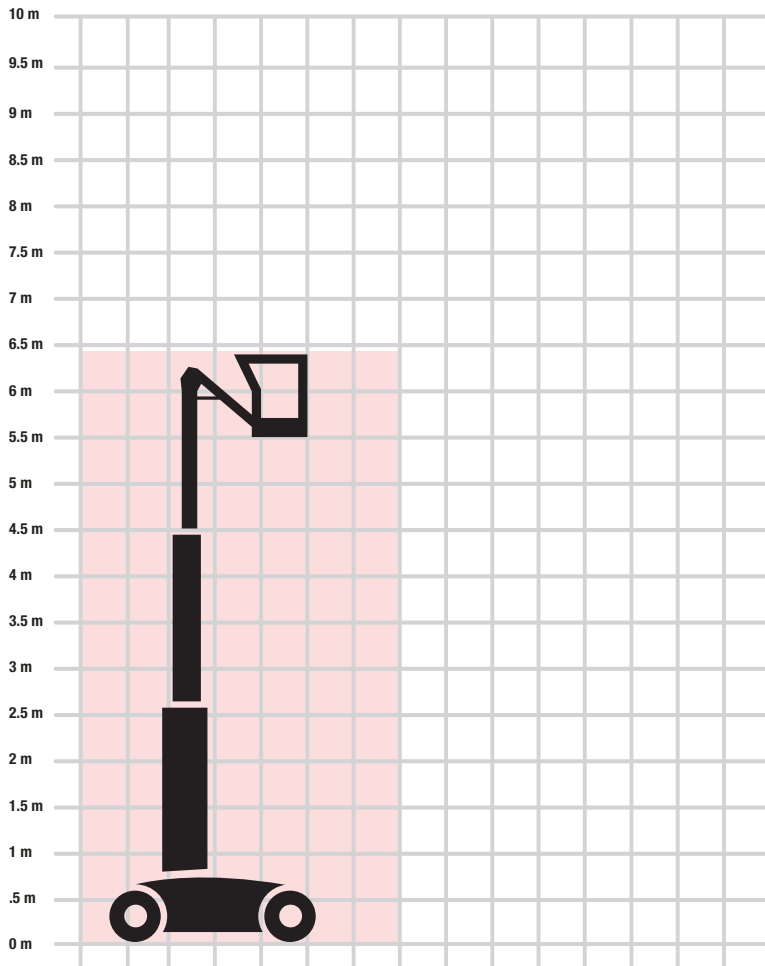
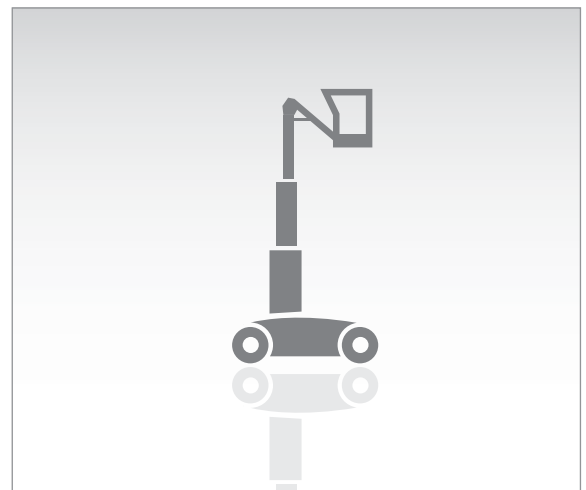


MAST BOOM - MB15- GENIE 15



Working Height	6.47m
Working Outreach	.5m
Travel Height	1.57m
Lift Capacity	227kg
Width	.75m
Energy Type	ELECRIC
Weight	994kg



YOUR NATIONAL HOTLINE

01924 2666 662

HIRE

CONTRACT HIRE

TRAINING

SALES

Lifterz Limited Unit 13 Ings Mill Complex Dale Street Ossett West Yorkshire WF5 9HQ

Tel: 01924 266662 Fax: 01924 266682

enquiries@lifterz.co.uk www.lifterz.co.uk

COMPANY REG N^o: 5995339

