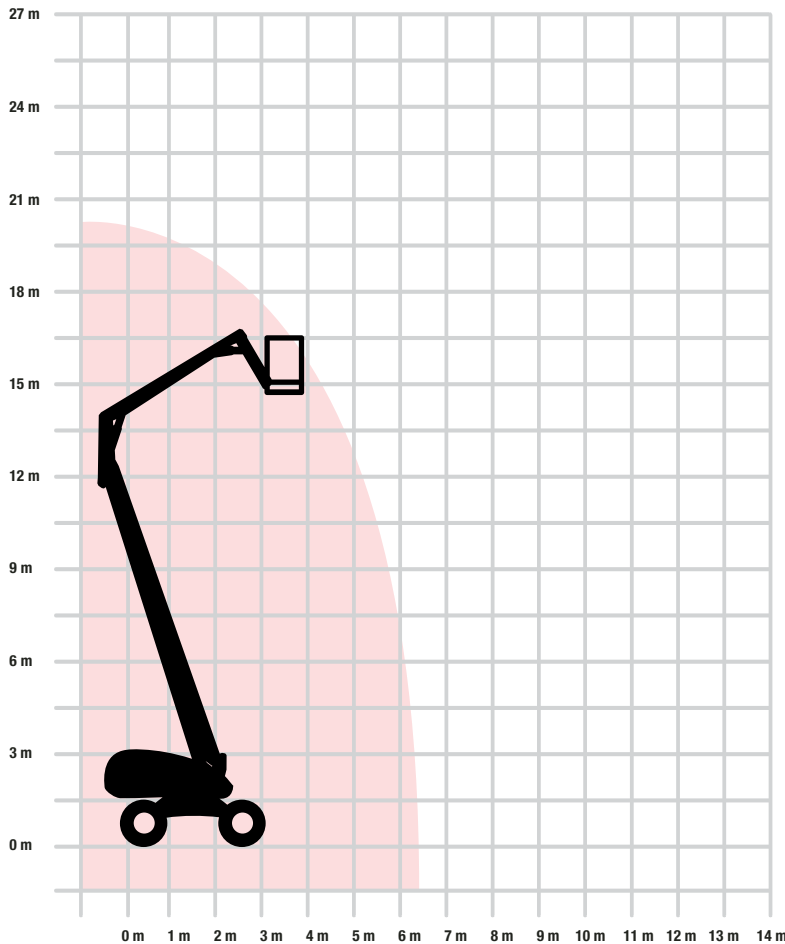


ELECTRIC BOOM - BB63 - NIFTZ HR21



Working Height	20.7m
Working Outreach	6.1m
Travel Height	1.9m
Lift Capacity	200kg
Width	1.5m
Energy Type	ELECTRIC
Weight	1400kg



YOUR NATIONAL HOTLINE

01924 2666 662

HIRE

CONTRACT HIRE

TRAINING

SALES

Lifterz Limited Unit 13 Ings Mill Complex Dale Street Ossett West Yorkshire WF5 9HQ

Tel: 01924 266662 Fax: 01924 266682

enquiries@lifterz.co.uk www.lifterz.co.uk

COMPANY REG N^o: 5995339

